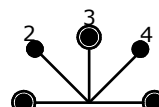
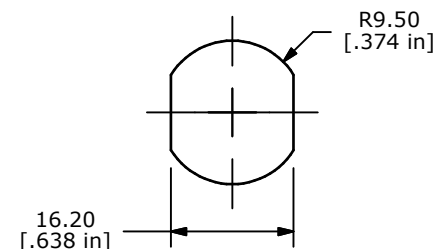


KEY CODE
A126



CIRCUIT: SP (45° INDEXING x 5)
CONTACT CONFIGURATION

CONNECTED TERMINAL #				
POS. 1	POS. 2	POS. 3	POS. 4	POS. 5
6-7	7-8	8-1	1-2	2-3

LEGEND

- = Detent positions
- ⦿ = Key pull possible in these positions

NOTES:

1. ALL DIMENSIONS IN MM[INCH]
2. GENERAL TOLERANCE: X.X = ± 0.4
X.XX = ± 0.25
3. TERM. NOS. FOR REFERENCE ONLY.
4. RATING: 4A @ 125VAC, 2A @ 250VAC
5. CONTACT RESISTANCE: 10 milli-OHMS MAX.
6. DIELECTRIC STRENGTH: 1,500 VAC-1Minute
7. MATERIALS:
HOUSING: NICKEL PLATED ZINC ALLOY (BLACK FACING)
CYLINDER: NICKEL PLATED ZINC ALLOY
TERMINAL AND CONTACTS: GOLD PLATED COPPER ALLOY
KEYS (2): BRASS
8. 2002/95/EC (ROHS) COMPLIANT



TITLE KO130M BLACK FACE

A	18626	Release For Production	9/10/09	BLR
REV	PCR NO	DESCRIPTION	DATE	BY

SCALE	DATE	DR	DWG	REV
1:1	9/10/2009	BLR	K200295	A

THE INFORMATION CONTAINED IN THIS DOCUMENT IS PROPRIETARY TO E-SWITCH AND IS NOT TO BE COPIED OR TRANSFERRED